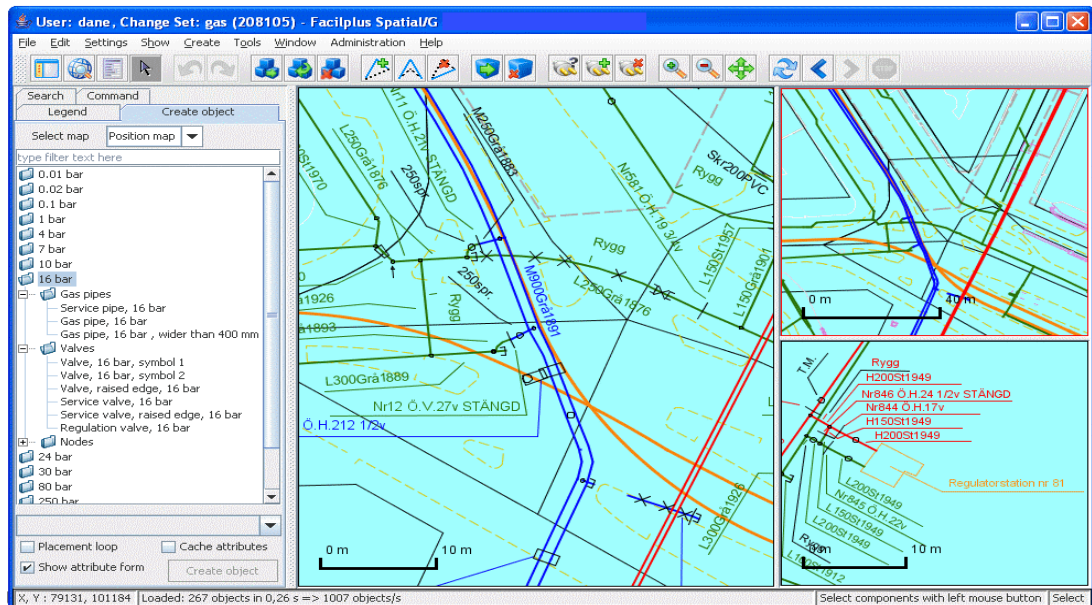


Facilplus Spatial/G

*Web-based network information system
for gas distribution utilities*



Always the Latest Information

Whether in the office or on the road, fast and easy access to network information is a must. Updating data, information searching or making traces that used to be handled from a proper office setup, can now be done remotely from any PC, stationary or mobile.

A Product Family

Facilplus Spatial/Gas has the same fundamental platform as Facilplus Spatial/E (for electricity networks), Facilplus Spatial/DH (for district heating and cooling networks), DP/WaW (for water and wastewater networks) and DP/Com (for optical fiber and telecom networks). This commonality provides an excellent opportunity for cost-effective resource management for multi-utility companies.

The Right Data in the Right Place

One of the fundamental aspects of Facilplus Spatial/Gas is that the information is defined and fed into the system only once. Thereafter, the information is accessible, to desired discretion, throughout the entire organization. This facilitates increased daily productivity while reducing costs incurred from duplicated work.

Readily accessible information is essential to solid customer relations. Here, Facilplus Spatial/Gas becomes an important tool also for the external communication. The detailed network information contained in Facilplus Spatial/Gas also makes it a key source of information for maintenance and investment decisions..

User's Role Determines Access to System's Diverse Functions

Accessibility enables a number of different types of users to simultaneously utilize Facilplus Spatial/Gas. The intuitive graphical user interface (GUI) can be easily adapted to suit each and every user's need. Anyone within the organization can be assigned a set of functions that are tailor-made to that person's tasks. This intelligent, simple-to-use solution guarantees an effective use of the system since it ultimately reduces development demands and increases the overall quality of network information.

Mobility

Facilplus Spatial/Gas lends itself to effective mobile possibilities. Users who access the system via laptop and GSM-modem have full functionality due to an effective communication protocol. This protocol also enables those on the road to read and update information with just the help of a hand held device such as a Palm Pilot or Pocket PC.

Facilplus Spatial/G in Brief

- Manages network components such as pipes, joints, valves, mixers, etc.
- Advanced handling of topology.
- Offers data consistency checks, e.g., it prevents the user from connecting together different pressures by mistake.
- Manages background maps.
- Maintains relationships between objects, e.g., when a T-piece is moved, connected pipes will move with it.
- Allows objects to be displayed in a variety of different graphic representations, i.e. a regulation station can be represented as a symbol in an overview map and as a polygon in a geographic map.
- Has special functionality for relining pipes that saves data for the old pipe while transferring the connectivity to the new pipe.
- Has historic version control.
- Manages thematic maps so that they can be easily displayed based on pipe type, construction year, etc.
- Has powerful search and report functionality.
- Has ability to export to external CAD programs.
- Has full tracing functionality and ability to simulate, e.g., the consequences of closed valves.
- Accessibility to other directories and data directly from the GIS system.
- Compatible with other external systems such as operation, customer care and billing systems.

Digpro är ett konsultbolag med huvudsaklig inriktning mot applikationsutveckling inom geografisk IT. Företagets djupa kunskap om GIT, databaser och webbapplikationer gör att vi kan erbjuda våra kunder lösningar som ligger i framkanten av dagens teknik.