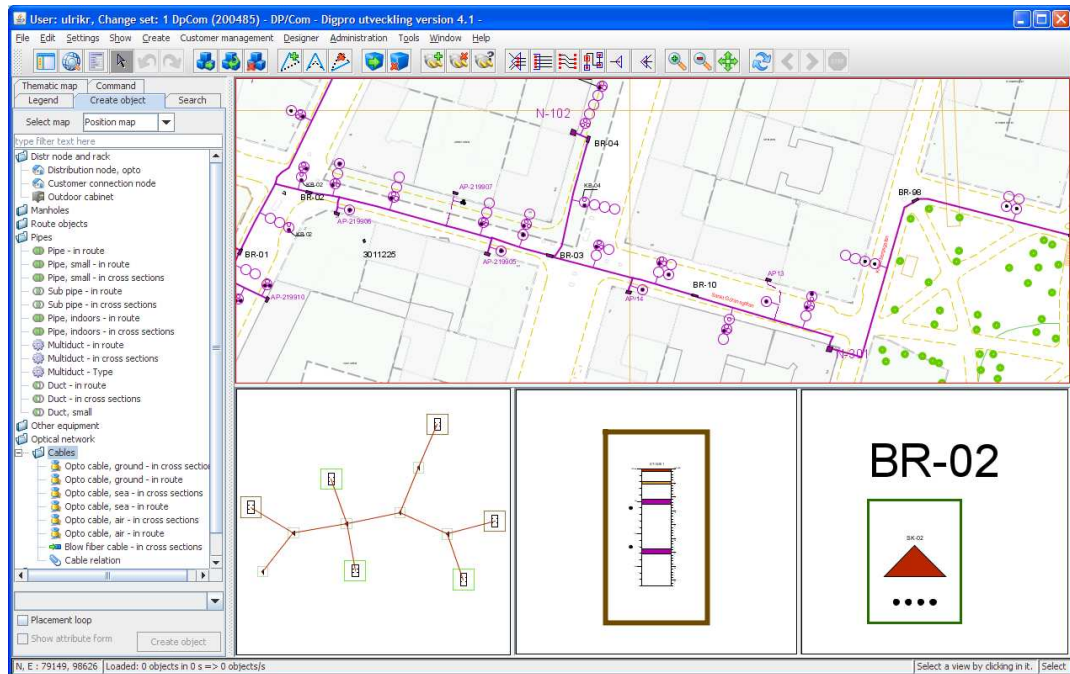


DP/Com

*Web-based network information system
for documentation of telecom networks*



Efficient solution

Working cost efficiently and customer focused with a telecom network requires a fast, efficient and analytic information management. It must be possible to update information and disseminate it simply in and outside an organization, with a minimum of administration, while maintaining security. There must be solid support to the work processes of an organization in the office and in the field. The solution to all this is DP/Com

DP/Com is a completely web-based system for managing telecom networks, where all the information is centrally stored in one database. The moment that information is registered, it is instantly accessible to the desired extent in the entire organization and to external contractors.

DP/Com provides advanced support to telecom networks from a global level to separate fibers and copper wires.

Benefits

An investment in DP/Com quickly leads to positive financial and organizational results. Among these, are:

- Central database storage, with fewer sources for errors, better integration possibilities and more powerful analytical tools, resulting in more accurate planning and maintenance.
- Support to all parts of the network documentation process from planning and design to final documentation, without costly redrawing or doubling up of documentation.
- Total web-based solution for all user categories distributed in and outside an organization without expensive administration costs for client installations and versions.
- Intuitive and user-friendly interface requiring little or no training.
- Time-saving mobile solutions.

Digpro

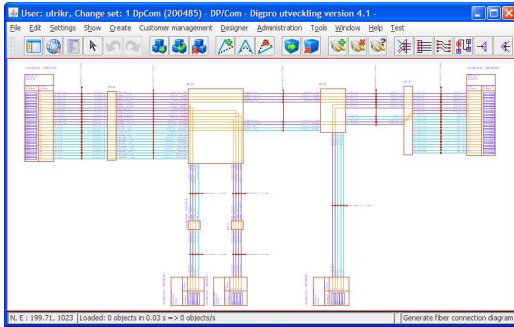
Ulriksborgsgatan 5
SE - 112 18 Stockholm, Sweden

Tel +46 8 506 326 00
Fax +46 8 506 326 20

info@digpro.se
www.digpro.se

Comprehensive

DP/Com is a system for the comprehensive documentation of all parts of a telecom network. Routes and nodes are documented on global and regional levels and logically linked to local routes, manholes, cabinets, nodes, etc. In turn, these contain pipes, cables, racks and various types of active and passive equipment. In the cables there are fibers or copper wires, connected to switches and splices. Fibers and wires are linked to services. DP/Com has support for the documentation of all these levels and their relationship to each other.



Efficient

Two basic concepts of the DP/Com design are efficiency and simplicity. Data need only be registered once in a simple interface and then spread to the organization's entire documentation and planning processes. DP/Com's advanced state and version management supports planning, comparisons and a controlled work flow, where multiple users can work jointly on the same data. Powerful and easy to use tools for advanced tasks, combined with automatically generated graphics, mean excellent data quality and overview without any unnecessary doubling up of work.

Flexible

DP/Com manages role-based configuration and data access. This means that one single application serves an organization's various needs with the correct functionality, depending on who logs in. In the same way, read and write access is controlled by roles on an object level and even for individual attributes. This, combined with the web based architecture, creates a unique potential for distribution and integration.

Common platform

DP/Com has the same powerful basic platform and user interface as the other applications in the Facilplus and DP/Spatial family. The platform is completely web-based, with central storage of all data in Oracle Spatial, which enables sharing and integration of data and applications in a totally new way.

DP/Com in brief

- Documentation of fiber, copper and radio networks on global, regional and local levels.
- Complete documentation of routes, manholes, cabinets, nodes, pipes, mult ducts, cables, splices, patches, fibers, blow fibers, copper wires, fiber splits, active equipment, base stations, radio sectors, etc.
- Automatically generated graphics in connection diagrams, overview, etc. reduces drafting work and minimizes errors.
- Network topology stored on route, cable and fibre or wire levels.
- Powerful and easily managed tools for splicing, patching, fiber splitting, etc.
- Advanced cross section management with intelligent handling of route and pipe contents.
- Storing and linking of service and customer information to the physical network. Defined points of integration to external CRM-systems.
- Display of background maps and aerial photographs together with network data.
- State management for controlled object life cycle documentation.
- Total management of network alternatives and history in long transactions, where multiple users can work on the same data.
- Completely web-based solution without client installations. Efficient communication protocol enables mobile work via GPRS/3G.
- Role-based user interface and data access.
- Storage of all data in Oracle Spatial, meaning an open and standardized format.
- Modular system architecture for easier configuration, integration and extension.

Digpro is a consultancy company, mainly focused on application development in Geographic IT. The company's extensive knowledge of GIT, databases and web applications means that we can offer solutions at the cutting edge of today's technology.