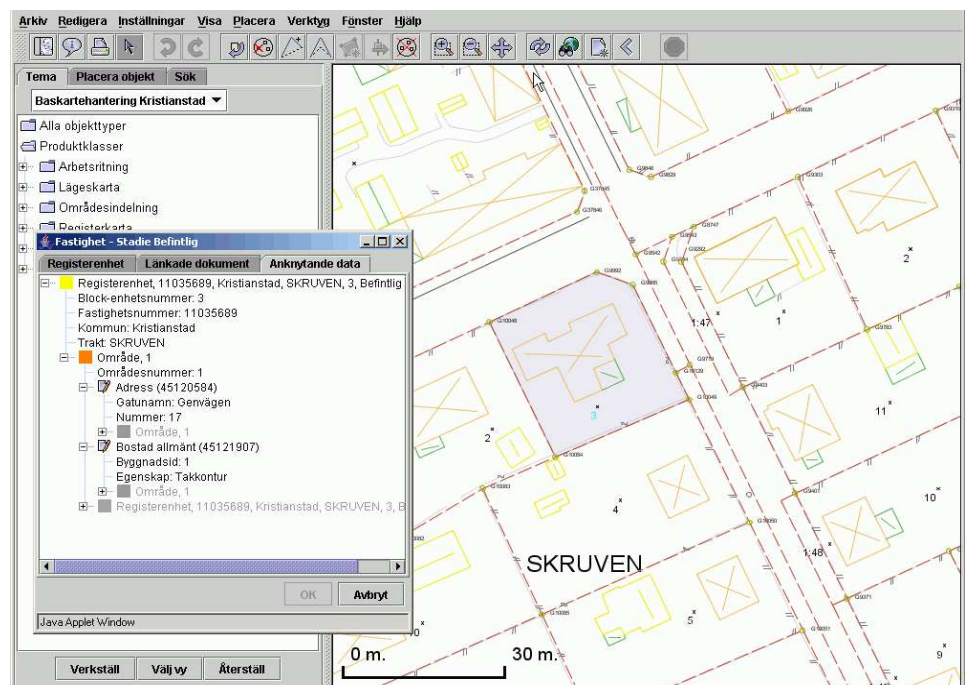


DP/Cadaster

Web Based Map Production System for Municipal Planning & Management

DP/Cadaster is a complete production system for Municipality base and overview maps with real-time connections to property databases and other operations systems.



Digpro

Ulriksborgsgatan 5
112 18 Stockholm
Tel +46 8 506 326 00
Fax +46 8 506 326 20
www.digpro.se

Up-to-date Information

Digital municipal maps are increasingly important in day-to-day operations. The demand increases for real-time and easy access to information, often in combination with information from property databases and other operations systems.

DP/Cadaster allows Municipals a totally web based system which manages both the production and presentation of geographic information in a unified environment.

A Product Suite

DP/Cadaster uses the same base platform as other applications in the DP/Spatial Family. A totally web based environment in combination with Oracle Spatial for the storage of geographic data.

Digpro has applications in the same environment for city networks, optical fiber networks and water/wastewater as well as electricity and gas applications (made in partnership with ABB).

System Overview

DP/Cadaster uses Oracle Spatial as the central data storage. All information, both graphic and attribute data, is managed and stored by the same database. Both graphic and attribute data is updated by a web client.

A database driven solution, with a web client, has a variety of significant advantages over a traditional client based GIS where the graphics are stored in file formats. Some of the unique advantages are:

- A unified data storage system based on international standards
- Data stored separately from client software
- Better possibilities when integrating geographic data with other operations systems
- Higher quality of data through better data modeling and rule based storage and maintenance
- Even simpler to distribute data and applications
- Decreased system administration

DP/Cadaster, which includes a vector based web client, works directly with the database via a web server. The client-side software is a java-applet, which is sent over from the web server when logging in. All updates and analysis of data is performed in the database, which means that only a limited amount of data is transferred between the server and client.

Customizeable Interface

DP/Cadaster has configurable role based interface, which allows the application to be uniquely customized to the users and meet their relative demands.

Flexibility

DP/Cadaster is flexible enough to offer a variety of possibilities. It can be customized to provide additional functionality for data analysis and maintenance since its platform is used over

a multitude of tasks such as: risk analysis, network information management or even the coordination of roadworks planning.



DP/Cadaster Summary

- Updates municipal databases as well as their base and overview maps
- Integration with real estate property and building databases
- The production of Base Maps and derived products are streamlined with municipal work-flow processes
- Open data model based upon general municipal data model
- Management of municipal planning and decisions
- Import/export of measurement data from most field measurement formats
- Positioning map for electricity, optical fiber and telecom networks, Water and Wastewater, Central heating and other technical utility systems
- Reference file management
- Built-in export support for other GIS/CAD formats

Digpro

Digpro is a Geographic Information Technology (GIT) consultancy whose primary expertise is developing and delivering advanced GIT database and web application solutions. Digpro's extensive knowledge, skills and experience provide their clients with solutions that keep them ahead of the technological curve. With over 20 years in the business and just over 60 employees, Digpro continues to be one of Sweden's leading Geographic IT consultancies.