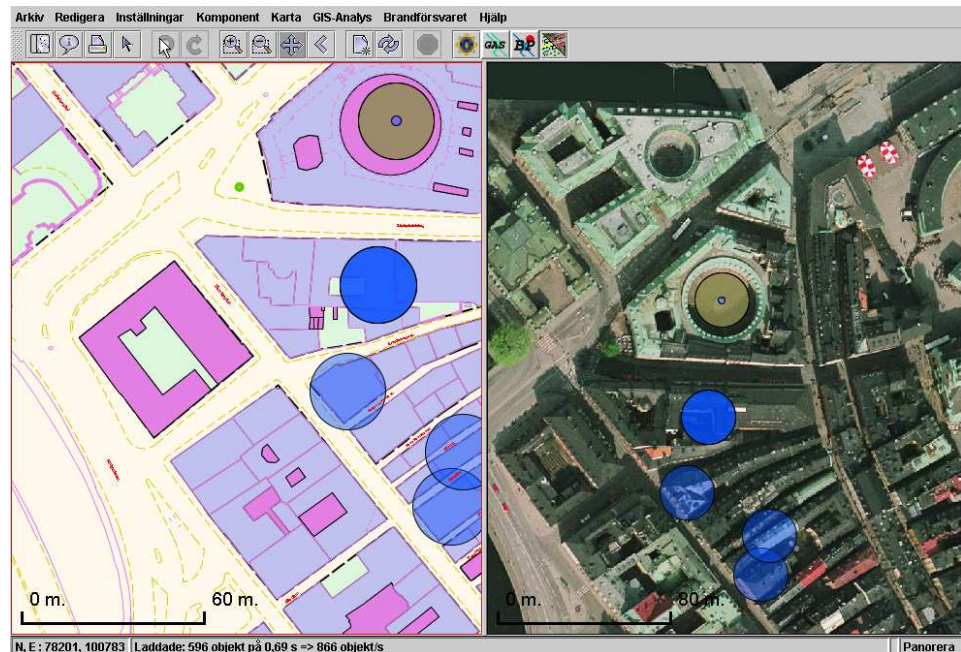


DP/Larm

Getting the right information fast!

DP/Larm is a support system used to meet the needs of the Police, Fire Departments and surveillance companies.



Example of a view of different objects presented in a map and in an aerial photograph.

Precision In Information

Anytime a situation arises where human life's could be at risk, getting precise, immediate information is of the utmost importance. Never is there a time when fast access to up to date and correct information is more crucial. Needless to say, having the right information system in place is vital.

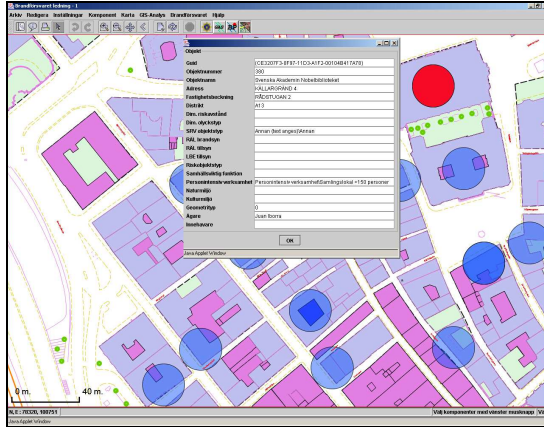
When accurate, fast, dependable decisions are to be made all the facts must be at hand. DP/Larm is there to support you. It connects all information to a geographic location so that it's easier to logistically and graphically make use of it. Being able for instance: to identify what there is in adjacent areas, make analyses of populations, identify risk objects (i.e. gas station etc), allocate buffer zones, all help to inform for faster, more effective decisions.

Digpro

Ulriksborgsgatan 5
112 18 Stockholm
Tel +46 8 5063 26 00
Fax +46 8 5063 26 20
www.digpro.se

DP/Larm

DP/Larm is the Stockholm's Fire Department's solution of choice¹. It offers a rational, complete solution that manages all the information of all types of objects that are included in any given area.



Shown here is information connected to the object in the red point.

Who Owns The Property, And Where Are The Keys?

Once the system has all the information and incorporates it into the map, everything is easy to find. Information representing their designated geographic location can be displayed in various forms such as text, pictures or sounds. It can also be presented in several ways for instance in the form of a drawing, to-do-list, object history, customer's contact person and so forth.

Driving Times

The system can calculate theoretical driving times and make it easy to prioritise the right resources for every assignment. Furthermore, GPS positions of all vehicles and resources can be displayed in real time in the map.

Consequence Analysis

- **Can other adjacent objects be affected?**

It is simple to make an analysis of an object which lies within a defined zone, and see what are the

¹ Stockholm's Fire Department uses DP/Larm as its risk analysis tool with map support, which is fed information from IKAROS. Information is displayed in graphic terms with support also for thematic presentation of rescue efforts as well as advanced analyses.

known properties and risk levels.

- **Are certain areas affected more than others?**

DP/Larm can make an analysis of trends in any given area.

Marketing

- **Where are my customers and/or where am I lacking them?**
- **Can I offer adjacent objects coverage without much increased cost?**

By knowing where the customers are, and in some cases, where they are not, can easily help improve direct marketing.

Local Awareness

Using a capable map based system reduces the need for local awareness. It's makes the delegation of tasks, or even the management of emergency operations from other geographic locations simple without sacrificing overall performance.

Digpro

Digpro is a Geographic Information Technology (GIT) consultancy whose primary expertise is in developing and delivering advanced GIT database and web application solutions. Digpro's extensive knowledge, skills and experience equips their clients with solutions that that keep them ahead of the technological curve. With over 20 years in the business and just over 60 employees, Digpro continues to be one of Sweden's leading Geographic IT consultancies.